

# PROVEN. POWERFUL. **PROPULSE** **NOW!**

Product Catalog



563-583-4758

[www.powermovingforward.com](http://www.powermovingforward.com)



Shipment  
within 24 hours  
for in-stock  
inventory



Industry standard  
products for high-  
pressure cleaning  
applications



Customized  
products available  
based on annual  
sales and minimum  
order quantities

# TABLE OF

# CONTENTS



## page 4

Pressure Washer Hose (Cold-Water)

**CONSUMER CLEAN**

1/4" 3100PSI (140°F) TEXTILE BRAID



## page 5

Pressure Washer Hose (Cold-Water)

**CONSUMER UBERFLEX®**

1/4" 3100PSI (140°F) TEXTILE BRAID



## pages 6-7

Pressure Washer Hose (Hot/Cold-Water)

**COMMERCIAL CLEAN**

3/8" 4000PSI (250°F) 1-WIRE BRAID



## page 8

Pressure Washer Hose (Cold-Water)

**COMMERCIAL CLEANSTREAM™**

3/8" OR 5/16" 4000PSI (140°F) 1-WIRE BRAID



## page 9

Pressure Washer Hose (Cold-Water)

**COMMERCIAL UBERFLEX®**

3/8" 4000PSI (140°) TEXTILE BRAID



## page 10

Pressure Washer Hose (Hot/Cold-Water)

**ARM-A-FLEX™**

3/8" 4785PSI (212°) 2-WIRE BRAID

# ProPulse NOW! Catalog

## TABLE OF CONTENTS



### page 11

Pressure Washer Hose (Hot/Cold-Water)

#### COMMERCIAL HOT CLEAN

3/8" 6000PSI (250°) 2-WIRE BRAID

1/2" 3987PSI (250°) 2-WIRE BRAID



### page 12

Car/Bay Wash Hose (Hot/Cold-Water)

#### RUBBER DROP HOSE

1/4" 3000PSI (250°) 1-WIRE BRAID

3/8" 4000PSI (250°) 1-WIRE BRAID



### page 13

Car/Bay Wash Hose (Cold-Water)

#### CLEANSTREAM™ DROP HOSE

3/8" 4000PSI (140°) 1-WIRE BRAID



### page 14

Car/Bay Wash Hose (Cold-Water)

#### UBERFLEX® DROP HOSE

3/8" 4000PSI (140°) TEXTILE BRAID



### page 15

Carpet Solution Hose (Hot/Cold-Water)

#### CARPET CLEAN

1/4" 3000PSI (250°) 1-WIRE BRAID



### page 16

Sewer & Jetter Hose (Cold-Water)

#### JETTER LATERAL LINE

1/8" 4800PSI (160°) TEXTILE BRAID

1/4" 4400PSI (160°) TEXTILE BRAID

3/8" 4000PSI (160°) TEXTILE BRAID



### page 17

Sewer & Jetter Hose (Cold-Water)

#### JETTER MAIN LINE

1/2" 4000PSI (160°) TEXTILE BRAID



### pages 18-19

Commercial Clean (Hot/Cold-Water)

#### BULK HOSE

VARIOUS SIZES & PSI



### pages 20-21

Pressure Washer

#### QUICK CONNECTS

SEE PAGE 23 FOR ORDERING INFO

# PRESSURE WASHER HOSE

PRESSURE WASHER HOSE (Cold-Water)

## CONSUMER CLEAN

This entry level cleaning hose is best suited for gas and electric cold-water pressure washers up to 2.5 GPM. Available in lengths of 25', 30' and 50', the Consumer Clean is a good choice for residential and light-duty cleaning environments.

### NOT FOR HOT WATER OR STEAM

- › Connectors: M22xM22 or M22xFBSPPSWL
- › Reinforcement: Textile Braid
- › Cover: Smooth Thermoplastic
- › Inner Diameter: 1/4"
- › Working (Max): 3100 PSI
- › Burst (Min) 3:1 Working Pressure
- › Impulse Life: 100,000+
- › Temperature (Max): 140°F

Consumer Clean Thermoplastic   1/4" 3100PSI (140°F) (Textile Braid)	
Item Code	Description
646200081	PW PLS OPP BK 1/4"x25' 3100PSI, M22xM22, 2BR, LONG NUTS (Black)
646200085	PW PLS OPP BK 1/4"x30' 3100PSI, M22xM22, 2BR, LONG NUTS (Black)
646200098	PW PLS OPP BK 1/4"x50' 3100PSI, M22xM22, 2BR, LONG NUT (Black)

> NON-MARKING



BLACK (BK)



PRESSURE WASHER HOSE (Cold-Water)

CONSUMER UBERFLEX®

ProPulse has upgraded the standard cold-water pressure washer hose to an innovative, lightweight, flexible, UV and ozone-resistant consumer cleaning hose. The UberFlex® is easy to use, stable in length and truly non-marking.

NOT FOR HOT WATER OR STEAM

- › Connectors: M22xM22

› Reinforcement: Textile Braid

› Cover: Matte Textured Thermoplastic

› Inner Diameter: 1/4"
- › Working (Max): 3100 PSI

› Burst (Min) 3:1 Working Pressure

› Impulse Life: 100,000+

› Temperature (Max): 140°F

Consumer UberFlex® Thermoplastic   1/4" 3100PSI (140°F) (Textile Braid)	
Item Code	Description
646200261	PW PLS UBER BK 1/4"x25' 3100PSI, M22xM22, 2BR, LONG NUTS (Matte Black)
646200594	PW PLS UBER BK 1/4"x50' 3100PSI, M22xM22, 2BR, LONG NUTS (Matte Black)
646200267	PW PLS UBER BL 1/4"x25' 3100PSI, M22xM22, 2BR, LONG NUTS (Matte Blue)
646200274	PW PLS UBER BL 1/4"x50' 3100PSI, M22xM22, 2BR, LONG NUTS (Matte Blue)

> NON-MARKING



# PRESSURE WASHER HOSE

## PRESSURE WASHER HOSE (Hot/Cold-Water)

### COMMERCIAL CLEAN

The Commercial Clean is an economical choice for pressure washer hose, designed for flow ratings of 2.5 to 5 GPM. Its rubber construction throughout and single layer of steel wire braid make it the the hose-of-choice for manufacturers of commercial-duty pressure washers, perfectly suited for high-flow and horsepower. **NOT FOR STEAM**

- › **Connectors:** SOLxSWV (with/without Quick Connects)
- › **Reinforcement:** 1-Layer Wire Braid
- › **Cover:** Smooth (Black or Blue only) or Wrapped Rubber
- › **Inner Diameter:** 3/8"
- › **Working (Max):** 4000 PSI
- › **Burst (Min)** 3:1 Working Pressure
- › **Impulse Life:** 200,000+
- › **Temperature (Max):** 250°F

#### Commercial Clean Rubber | 3/8" 4000PSI (250°F) (1-Wire Braid)

Item Code	Description	
535100002	PW RBR SM 1WIRE 3/8"x50' 4000PSI, SOLxSWV, 2BR (Smooth Black)	
535100005	PW RBR SM 1WIRE 3/8"x100' 4000PSI, SOLxSWV, 2BR (Smooth Black)	
535100070	PW RBR SM 1WIRE BL 3/8"x25' 4000PSI, SOLxSWV, 2BR (Smooth Blue)	
535100057	PW RBR SM 1WIRE BL 3/8"x50' 4000PSI, SOLxSWV, 2BR (Smooth Blue)	
535100058	PW RBR SM 1WIRE BL 3/8"x100' 4000PSI, SOLxSWV, 2BR (Smooth Blue)	
989400003	PW RBR 1WIRE 3/8"x25' 4000PSI, SOLxSWV, 2BR (Black)	
989400004	PW RBR 1WIRE 3/8"x50' 4000PSI, SOLxSWV, 2BR (Black)	
989400075	PW RBR 1WIRE 3/8"x50' 4000PSI, SOLxSWV, 2BR, QCs (Black)	
989400031	PW RBR 1WIRE 3/8"x75' 4000PSI, SOLxSWV, 2BR (Black)	BLACK
989400022	PW RBR 1WIRE 3/8"x100' 4000PSI, SOLxSWV, 2BR (Black)	
989400019	PW RBR 1WIRE 3/8"x100' 4000PSI, SOLxSWV, 2BR, QCs (Black)	
989400109	PW RBR 1WIRE BL 3/8"x25' 4000PSI, SOLxSWV, 2BR (Blue)	
989400052	PW RBR 1WIRE BL 3/8"x50' 4000PSI, SOLxSWV, 2BR (Blue)	BLUE (BL)
989400081	PW RBR 1WIRE BL 3/8"x100' 4000PSI, SOLxSWV, 2BR (Blue)	
989400007	PW RBR 1WIRE GR 3/8"x25' 4000PSI, SOLxSWV, 2BR (Grey)	
989400008	PW RBR 1WIRE GR 3/8"x50' 4000PSI, SOLxSWV, 2BR (Grey)	
989400150	PW RBR 1WIRE GR 3/8"x50' 4000PSI, SOLxSWV, 2BR, QCs (Grey)	GREY (GR)
989400043	PW RBR 1WIRE GR 3/8"x100' 4000PSI, SOLxSWV, 2BR (Grey)	
989400993	PW RBR 1WIRE GR 3/8"x100' 4000PSI, SOLxSWV, 2BR, QCs (Grey)	
989400099	PW RBR 1WIRE YL 3/8"x50' 4000PSI, SOLxSWV, 2BR (Yellow)	
989400101	PW RBR 1WIRE YL 3/8"x100' 4000PSI, SOLxSWV, 2BR (Yellow)	YELLOW (YL)

Not all listed items have inventory. Contact your customer service team for product availability.

**⚠ WARNING!** This product can expose you to chemicals including carbon black which is known to the State of California to cause cancer. For more info visit [P65Warnings.ca.gov](http://P65Warnings.ca.gov)







**PRESSURE WASHER HOSE (Hot/Cold-Water)**

# COMMERCIAL CLEAN RUBBER JUMPER

- › Connectors: SOLxSWV
- › Reinforcement: 1-Layer Wire Braid
- › Cover: Wrapped Rubber
- › Inner Diameter: 3/8"
- › Working (Max): 4000 PSI
- › Burst (Min) 3:1 Working Pressure
- › Impulse Life: 200,000+
- › Temperature (Max): 250°F

Commercial Clean Rubber Jumper   3/8" 4000PSI (250°F) (1-Wire Braid)	
Item Code	Description
9895B3024	PW RBR 1WIRE 3/8"x2' 4000PSI, SOLxSWV (Black)
9895B3048	PW RBR 1WIRE 3/8"x4' 4000PSI, SOLxSWV (Black)
9895B5024	PW RBR 1WIRE GR 3/8"x2' 4000PSI, SOLxSWV (Grey)
9895B5048	PW RBR 1WIRE GR 3/8"x4' 4000PSI, SOLxSWV (Grey)
9895B5072	PW RBR 1WIRE GR 3/8"x6' 4000PSI, SOLxSWV (Grey)
9895B5120	PW RBR 1WIRE GR 3/8"x10' 4000PSI, SOLxSWV (Grey)



# PRESSURE WASHER HOSE

## PRESSURE WASHER HOSE (Cold-Water)

### COMMERCIAL CLEANSTREAM™

Traditional rubber hose is heavy, leaves marks and is hard to handle. The Commercial Cleanstream is a revolutionary, light-weight, flexible, thermoplastic hose for the most demanding, high performance cold-water pressure washers. Exclusive to ProPulse, this patented product is ideally suited for cold-water flat surface preparation, commercial car cleaning, agricultural cleaning and much more. **NOT FOR HOT WATER OR STEAM**

- › Connectors: SOLxSWV
- › Reinforcement: 1-Layer Wire Braid
- › Cover: Matte Textured Thermoplastic
- › Inner Diameter: 5/16" or 3/8"
- › Working (Max): 4000 PSI
- › Burst (Min) 3:1 Working Pressure
- › Impulse Life: 200,000+
- › Temperature (Max): 140°F

#### Commercial Cleanstream™ Thermoplastic | 5/16" 4000PSI (140°F) (1-Wire Braid)

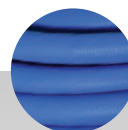
Item Code	Description
489400026	PW PLS HYBD BL 5/16"x50' 4000PSI, -06SOLx-06SWV, 2SM BR (Matte Blue)

#### Commercial Cleanstream™ Thermoplastic | 3/8" 4000PSI (140°F) (1-Wire Braid)

Item Code	Description
489400011	PW PLS HYBD BK 3/8"x50' 4000PSI, SOLxSWV, 2SM BR (Matte Black)
489400013	PW PLS HYBD BL 3/8"x25' 4000PSI, SOLxSWV, 2SM BR (Matte Blue)
489400014	PW PLS HYBD BL 3/8"x50' 4000PSI, SOLxSWV, 2SM BR (Matte Blue)
489400015	PW PLS HYBD BL 3/8"x100' 4000PSI, SOLxSWV, 2SM BR (Matte Blue)
489400008	PW PLS HYBD GR 3/8"x50' 4000PSI, SOLxSWV, 2SM BR (Matte Grey)
489400009	PW PLS HYBD GR 3/8"x100' 4000PSI, SOLxSWV, 2SM BR (Matte Grey)



MATTE  
BLACK (BK)  
3/8" only



MATTE  
BLUE (BL)



MATTE  
GREY (GR)  
3/8" only



Not all listed items have inventory. Contact your customer service team for product availability.

**WARNING!** This product can expose you to chemicals including nickel which is known to the State of California to cause cancer. For more info visit [P65Warnings.ca.gov](http://P65Warnings.ca.gov)



**PRESSURE WASHER HOSE (Cold-Water)**

# COMMERCIAL UBERFLEX®

UberFlex® possesses the unique properties of superior resistance to permanent kinking and abrasion and stability in length. The textured cover provides reduced snagging and drag resistance and overall ease of handling. UberFlex® hoses are preferred by pressure washer manufacturers for their middle and high-end entry level products.

## NOT FOR HOT WATER OR STEAM

- › Connectors: SOLxSWV (with/without Quick Connects)
- › Reinforcement: Textile Braid
- › Cover: Matte Textured Thermoplastic
- › Inner Diameter: 3/8"
- › Working (Max): 4000 PSI
- › Burst (Min) 3:1 Working Pressure
- › Impulse Life: 200,000+
- › Temperature (Max): 140°F

Commercial UberFlex® Thermoplastic   3/8" 4000PSI (140°F) (Textile Braid)	
Item Code	Description
646200669	PW PLS UBER BK 3/8"x50' 4000PSI, SOLxSWV, 2SM BR (Matte Black)
646200670	PW PLS UBER BK 3/8"x50' 4000PSI, SOLxSWV, 2SM BR, QCs (Matte Black)
646200672	PW PLS UBER BK 3/8"x100' 4000PSI, SOLxSWV, 2SM BR (Matte Black)
646200674	PW PLS UBER BK 3/8"x100' 4000PSI, SOLxSWV, 2SM BR, QCs (Matte Black)
646200665	PW PLS UBER BL 3/8"x50' 4000PSI, SOLxSWV, 2SM BR (Matte Blue)
646200990	PW PLS UBER BL 3/8"x50' 4000PSI, SOLxSWV, 2SM BR, QCs (Matte Blue)
646200673	PW PLS UBER BL 3/8"x100' 4000PSI, SOLxSWV, 2SM BR (Matte Blue)
646200991	PW PLS UBER BL 3/8"x100' 4000PSI, SOLxSWV, 2SM BR, QCs (Matte Blue)

> NON-MARKING



Not all listed items have inventory. Contact your customer service team for product availability.

**⚠ WARNING!** This product can expose you to chemicals including nickel which is known to the State of California to cause cancer. For more info visit [P65Warnings.ca.gov](http://P65Warnings.ca.gov)

# PRESSURE WASHER HOSE

PRESSURE WASHER HOSE (Hot/Cold-Water)

## ARM-A-FLEX™

It's an undeniable fact: most rubber pressure washer hoses wear from the outside in, rather than the inside out, and in some applications, that happens way too fast. Wooden decks, asphalt roofs/surfaces and concrete can all tear up a hose cover. ProPulse Arm-a-Flex™ boasts a specially engineered ultra-high molecular weight jacket designed to extend hose cover life by up to ten times.

### NOT FOR HOT WATER OR STEAM

- › Connectors: SOLxSWV
- › Reinforcement: 2-Layer Wire Braid
- › Cover: UHMWPE Ultra-High Molecular Weight Polyethylene
- › Inner Diameter: 3/8"
- › Working (Max): 4785 PSI
- › Burst (Min) 4:1 Working Pressure
- › Impulse Life: 200,000+
- › Temperature (Max): 212°F

### Commercial Arm-A-Flex™ Polyethylene | 3/8" 4785PSI (212°F) (2-Wire Braid)

Item Code	Description
989400258	PW RBR 2WIRE T3 3/8"x50' 4785PSI, SOLxSWV, 2 RED BR (Black)
989400272	PW RBR 2WIRE T3 3/8"x100' 4785PSI, SOLxSWV, 2 RED BR (Black)



**PRESSURE WASHER HOSE (Hot/Cold-Water)**

## COMMERCIAL HOT CLEAN

Designed for high flow (up to 8 GPM), heavy-duty, hot-water cleaning applications, this hose has rubber construction throughout and a double layer of steel wire braid. Preferred by manufacturers of hot-water pressure washers, the Commercial Hot Clean is used by many OEMs at the upper end of their product range. **NOT FOR STEAM**

- › Connectors: SOLxSWV
- › Reinforcement: 2-Layer Wire Braid
- › Cover: Wrapped Textured Rubber
- › Inner Diameter: 3/8" or 1/2"
- › Working (Max): 6000 PSI (3/8") or 3987 PSI (1/2")
- › Burst (Min) 3:1 Working Pressure
- › Impulse Life: 200,000+
- › Temperature (Max): 250°F

### Commercial Hot Clean Rubber | 3/8" 6000PSI (250°F) (2-Wire Braid)

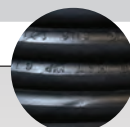
Item Code	Description
989400027	PW RBR 2WIRE 3/8"x50' 6000PSI, SOLxSWV, 2 RED BR (Black)
989400146	PW RBR 2WIRE 3/8"x75' 6000PSI, SOLxSWV, 2 RED BR (Black)
989400026	PW RBR 2WIRE 3/8"x100' 6000PSI, SOLxSWV, 2 RED BR (Black)
989400060	PW RBR 2WIRE GR 3/8"x50' 6000PSI, SOLxSWV, 2 RED BR (Grey)
989400061	PW RBR 2WIRE GR 3/8"x100' 6000PSI, SOLxSWV, 2 RED BR (Grey)

### Commercial Hot Clean Rubber | 1/2" 3987PSI (250°F) (2-Wire Braid)

Item Code	Description
989400314	PW RBR 2WIRE 1/2"x50' 3987PSI, SOLxSWV, 2SM BR (Black)

### Commercial Hot Clean Rubber Jumper | 3/8" 6000PSI (250°F) (2-Wire Braid)

Item Code	Description
9895B9024	PW RBR 2WIRE GR 3/8"x2' 6000PSI, SOLxSWV (Grey)
9895B9048	PW RBR 2WIRE GR 3/8"x4' 6000PSI, SOLxSWV (Grey)
9895B9072	PW RBR 2WIRE GR 3/8"x6' 6000PSI, SOLxSWV (Grey)
9895B9096	PW RBR 2WIRE GR 3/8"x8' 6000PSI, SOLxSWV (Grey)
9895B9120	PW RBR 2WIRE GR 3/8"x10' 6000PSI, SOLxSWV (Grey)



BLACK



GREY (GR)

Not all listed items have inventory. Contact your customer service team for product availability.

**⚠ WARNING!** This product can expose you to chemicals including carbon black which is known to the State of California to cause cancer. For more info visit [P65Warnings.ca.gov](http://P65Warnings.ca.gov)



# CAR/BAY WASH DROP HOSE

CAR/BAY WASH HOSE (Hot/Cold-Water)

## RUBBER DROP HOSE

A perfect match for self-service car wash applications, ProPulse stocks standard rubber car wash drop hoses. **NOT FOR STEAM**

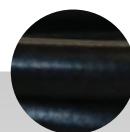
- › Connectors: SOLxSOL
- › Reinforcement: 1-Layer Wire Braid
- › Cover: Smooth Rubber
- › Inner Diameter: 1/4" or 3/8"
- › Working (Max): 3000 PSI (1/4") or 4000 PSI (3/8")
- › Burst (Min) 3:1 Working Pressure
- › Impulse Life: 200,000+
- › Temperature (Max): 250°F

### Rubber Drop Hose | 1/4" 3000PSI (250°F) (1-Wire Braid)

Item Code	Description
9895PC144	PW RBR SM 1WIRE 1/4"x12' 3000PSI, -06SOLx-06SOL, 1SM BR (Smooth Black)
9895PC180	PW RBR SM 1WIRE 1/4"x15' 3000PSI, -06SOLx-06SOL, 1SM BR (Smooth Black)
9895PC216	PW RBR SM 1WIRE 1/4"x18' 3000PSI, -06SOLx-06SOL, 1SM BR (Smooth Black)
9895PH144	PW RBR SM 1WIRE BL 1/4"x12' 3000PSI, -06SOLx-06SOL, 1SM BR (Smooth Blue)
9895PH180	PW RBR SM 1WIRE BL 1/4"x15' 3000PSI, -06SOLx-06SOL, 1SM BR (Smooth Blue)
9895PH216	PW RBR SM 1WIRE BL 1/4"x18' 3000PSI, -06SOLx-06SOL, 1SM BR (Smooth Blue)

### Rubber Drop Hose | 3/8" 4000PSI (250°F) (1-Wire Braid)

Item Code	Description
9895RA144	PW RBR SM 1WIRE 3/8"x12' 4000PSI, SOLxSOL, 1SM BR (Smooth Black)
9895RA180	PW RBR SM 1WIRE 3/8"x15' 4000PSI, SOLxSOL, 1SM BR (Smooth Black)
9895RA216	PW RBR SM 1WIRE 3/8"x18' 4000PSI, SOLxSOL, 1SM BR (Smooth Black)
9895RJ144	PW RBR SM 1WIRE BL 3/8"x12' 4000PSI, SOLxSOL, 1SM BR (Smooth Blue)
9895RJ180	PW RBR SM 1WIRE BL 3/8"x15' 4000PSI, SOLxSOL, 1SM BR (Smooth Blue)
9895RJ216	PW RBR SM 1WIRE BL 3/8"x18' 4000PSI, SOLxSOL, 1SM BR (Smooth Blue)



SMOOTH  
BLACK



SMOOTH  
BLUE (BL)

Not all listed items have inventory. Contact your customer service team for product availability.

**WARNING!** This product can expose you to chemicals including carbon black which is known to the State of California to cause cancer. For more info visit [P65Warnings.ca.gov](http://P65Warnings.ca.gov)

CAR/BAY WASH HOSE (Cold-Water)

## CLEANSTREAM™ DROP HOSE

Ideal for self-service carwash applications, Cleanstream™ is the latest patented technology from ProPulse, providing a real upgrade from the standard bay wash drop hose. For the optimal car wash experience and performance, it possesses unique properties such as unmatched UV, ozone, chemical and abrasion resistance, superior flexibility, overall ease of handling and is truly non-marking. The proprietary, matte textured cover is five times more abrasion resistant and up to 30% lighter than its equivalent counterpart, reducing user fatigue.

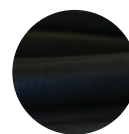
### NOT FOR HOT WATER OR STEAM

- › Connectors: SOLxSOL
- › Reinforcement: 1-Layer Wire Braid
- › Cover: Matte Textured Thermoplastic
- › Inner Diameter: 3/8"
- › Working (Max): 4000 PSI
- › Burst (Min) 3:1 Working Pressure
- › Impulse Life: 200,000+
- › Temperature (Max): 140°F

#### Cleanstream™ Thermoplastic Drop Hose | 3/8" 4000PSI (140°F) (1-Wire Braid)

Item Code	Description
489400016	PW PLS HYBD BK 3/8"x12' 4000PSI, SOLxSOL, 1SM BR (Matte Black)
489400017	PW PLS HYBD BK 3/8"x15' 4000PSI, SOLxSOL, 1SM BR (Matte Black)
489400018	PW PLS HYBD BK 3/8"x18' 4000PSI, SOLxSOL, 1SM BR (Matte Black)
489400019	PW PLS HYBD BL 3/8"x12' 4000PSI, SOLxSOL, 1SM BR (Matte Blue)
489400020	PW PLS HYBD BL 3/8"x15' 4000PSI, SOLxSOL, 1SM BR (Matte Blue)
489400021	PW PLS HYBD BL 3/8"x18' 4000PSI, SOLxSOL, 1SM BR (Matte Blue)

+ NON-MARKING



MATTE  
BLACK (BK)



MATTE  
BLUE (BL)



Not all listed items have inventory. Contact your customer service team for product availability.

**⚠ WARNING!** This product can expose you to chemicals including nickel which is known to the State of California to cause cancer. For more info visit [P65Warnings.ca.gov](http://P65Warnings.ca.gov)

# CAR/BAY WASH DROP HOSE

CAR/BAY WASH HOSE (Cold-Water)

## UBERFLEX® DROP HOSE

The patented ProPulse UberFlex® is a superior alternative to the standard rubber bay wash drop hose. Its innovative, durable, lightweight construction makes it ideal for self-service carwash applications. Providing the ultimate car wash experience and performance, UberFlex® has unmatched UV, ozone, chemical and abrasion resistance, supreme flexibility, overall ease of handling and is truly non-marking. The proprietary, matte textured cover is five times more abrasion resistant and up to 30% lighter than its equivalent counterpart.

**NOT FOR HOT WATER OR STEAM**

- › Connectors: SOLxSOL
- › Reinforcement: Textile Braid
- › Cover: Matte Textured Thermoplastic
- › Inner Diameter: 3/8"
- › Working (Max): 4000 PSI
- › Burst (Min) 3:1 Working Pressure
- › Impulse Life: 200,000+
- › Temperature (Max): 140°F

### UberFlex® Thermoplastic Drop Hose | 3/8" 4000PSI (140°F) (Textile Braid)

Item Code	Description
646200619	PW PLS UBER BK 3/8"x12' 4000PSI, SOLxSOL, 1SM BR (Matte Black)
646200620	PW PLS UBER BK 3/8"x15' 4000PSI, SOLxSOL, 1SM BR (Matte Black)
646200621	PW PLS UBER BK 3/8"x18' 4000PSI, SOLxSOL, 1SM BR (Matte Black)
646200616	PW PLS UBER BL 3/8"x12' 4000PSI, SOLxSOL, 1SM BR (Matte Blue)
646200617	PW PLS UBER BL 3/8"x15' 4000PSI, SOLxSOL, 1SM BR (Matte Blue)
646200618	PW PLS UBER BL 3/8"x18' 4000PSI, SOLxSOL, 1SM BR (Matte Blue)

+ NON-MARKING



MATTE  
BLACK (BK)

MATTE  
BLUE (BL)



Not all listed items have inventory. Contact your customer service team for product availability.

**⚠ WARNING!** This product can expose you to chemicals including nickel which is known to the State of California to cause cancer. For more info visit [P65Warnings.ca.gov](https://www.p65warnings.ca.gov)



CAR/BAY WASH HOSE (Hot/Cold-Water)

## CARPET CLEAN

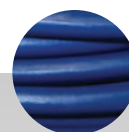
Carpet cleaners' preferred choice for hot-water solution hoses, Carpet Clean has a smooth blue, less-marking cover, with a seamless heat and chemical resistant tube, making it ideal for the commercial carpet cleaning professional. **NOT FOR STEAM**

- › Connectors: SOLxSOL
- › Reinforcement: 1-Layer Wire Braid
- › Cover: Smooth Less-Marking Rubber
- › Inner Diameter: 1/4"
- › Working (Maximum): 3000 PSI
- › Burst (Min) 4:1 Working Pressure
- › Impulse Life: 200,000+
- › Temperature (Max): 250°F

### Carpet Clean Rubber | 1/4" 3000PSI (250°F) (1-Wire Braid)

Item Code	Description
535100059	PW RBR SM 1WIRE BL 1/4"x50' 3000PSI, SOLxSOL, 2SM BR (Blue)
535100123	PW RBR SM 1WIRE BL 1/4"x75' 3000PSI, SOLxSOL, 2SM BR (Blue)
535100105	PW RBR SM 1WIRE BL 1/4"x100' 3000PSI, SOLxSOL, 2SM BR (Blue)
535100118	PW RBR SM 1WIRE BL 1/4"x150' 3000PSI, SOLxSOL, 2SM BR (Blue)
535100120	PW RBR SM 1WIRE BL 1/4"x200' 3000PSI, SOLxSOL, 2SM BR (Blue)

+ COMPARED TO GOODYEAR NEPTUNE



BLUE (BL)

# SEWER & JETTER HOSE

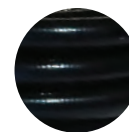
## SEWER & JETTER HOSE (Cold-Water)

### JETTER LATERAL LINE\*

This hose is ideal for consumer and commercial sewer jetters with operating pressures of 4800 PSI or less and flow rates of 1.5 -5.0 GPM. ProPulse's jetter hose offers optimum flexibility and lightweight construction.

#### NOT FOR HOT WATER OR STEAM

- › Connectors: SOLxSOL or SOLxSWV
- › Reinforcement: Textile Braid
- › Cover: Smooth Thermoplastic
- › Inner Diameter: 1/8", 1/4" or 3/8"  
3/16" (4800 PSI) available on request
- › Working (Max): 4800 PSI (1/8"),  
4400 PSI (1/4") or 4000 PSI (3/8")
- › Burst (Min) 2.5:1 Working Pressure
- › Impulse Life: 200,000+
- › Temperature (Max): 160°F



BLACK (BK)

#### Jetter Lateral Line & Drain Clean Thermoplastic | 1/8" 4800PSI (160°F) (Textile Braid)

Item Code	Description
686200047	SWR PLS BK 1/8"x25' 4800PSI, SOLxSOL, -04 BUSHING (Black)
686200007	SWR PLS BK 1/8"x50' 4800PSI, SOLxSOL, -04 BUSHING (Black)
686200051	SWR PLS BK 1/8"x100' 4800PSI, SOLxSOL, -04 BUSHING (Black)
686200053	SWR PLS BK 1/8"x200' 4800PSI, SOLxSOL, -04 BUSHING (Black)

#### Jetter Lateral Line & Drain Clean Thermoplastic | 1/4" 4400PSI (160°F) (Textile Braid)

Item Code	Description
686200032	SWR PLS BK 1/4"x50' 4400PSI, SOLxSWV (Black)
686200012	SWR PLS BK 1/4"x100' 4400PSI, SOLxSWV (Black)
686200010	SWR PLS BK 1/4"x150' 4400PSI, SOLxSWV (Black)
686200020	SWR PLS BK 1/4"x200' 4400PSI, SOLxSWV (Black)
686200050	SWR PLS BK 1/4"x300' 4400PSI, SOLxSWV, REELED (Black)

#### Jetter Lateral Line & Drain Clean Thermoplastic | 3/8" 4000PSI (160°F) (Textile Braid)

Item Code	Description
686200033	SWR PLS BK 3/8"x50' 4000PSI, SOLxSWV (Black)
686200021	SWR PLS BK 3/8"x100' 4000PSI, SOLxSWV (Black)
686200034	SWR PLS BK 3/8"x150' 4000PSI, SOLxSWV (Black)
686200011	SWR PLS BK 3/8"x200' 4000PSI, SOLxSWV, REELED (Black)
686200035	SWR PLS BK 3/8"x300' 4000PSI, SOLxSWV, REELED (Black)
686200049	SWR PLS BK 3/8"x400' 4000PSI, SOLxSWV, REELED (Black)
686200159	SWR PLS BK 3/8"x600' 4000PSI, SOLxSOL, REELED (Black)

**\* STANDARD 24-HOUR SHIPPING COMMITMENT IS NOT GUARANTEED FOR JETTER HOSE.  
PLEASE CONTACT YOUR CUSTOMER SERVICE TEAM FOR AVAILABILITY.**

**⚠ WARNING!** This product can expose you to chemicals including nickel which is known to the State of California to cause cancer. For more info visit [P65Warnings.ca.gov](http://P65Warnings.ca.gov)

## SEWER & JETTER HOSE (Cold-Water)

# JETTER MAIN LINE\*

These commercial and municipal cleaning hoses, with an operating pressure of 4000 PSI, are designed for truck or trailer mount sewer jetter applications. **NOT FOR HOT WATER OR STEAM**

- › Connectors: SOLxSWV
- › Reinforcement: Textile Braid
- › Cover: Smooth Thermoplastic
- › Inner Diameter: 1/2"
- › Working (Max): 4000 PSI
- › Burst (Min) 2.5:1 Working Pressure
- › Impulse Life: 200,000+
- › Temperature (Max): 160°F



GREEN (GN)

### Jetter Main Line Thermoplastic | 1/2" 4000PSI (160°F) (Textile Braid)

Item Code	Description
686200250	SWR PLS GN 1/2"x50' 4000PSI, SOLxSWV (Green)
686200252	SWR PLS GN 1/2"x100' 4000PSI, SOLxSWV (Green)
686200253	SWR PLS GN 1/2"x200' 4000PSI, SOLxSWV, REELED (Green)
686200095	SWR PLS GN 1/2"x300' 4000PSI, SOLxSWV, REELED (Green)
686200255	SWR PLS GN 1/2"x400' 4000PSI, SOLxSWV, REELED (Green)
686200098	SWR PLS GN 1/2"x500' 4000PSI, SOLxSWV, REELED (Green)
686200256	SWR PLS GN 1/2"x600' 4000PSI, SOLxSWV, REELED (Green)

**\* STANDARD 24-HOUR SHIPPING COMMITMENT IS NOT GUARANTEED FOR JETTER HOSE. PLEASE CONTACT YOUR CUSTOMER SERVICE TEAM FOR AVAILABILITY.**





# BULK HOSE REELS

## BULK HOSE (Hot/Cold-Water)

### BULK REELS\*

ProPulse's industry standard bulk pressure washer hoses are designed for up to 5 GPM heavy-duty cleaning applications and are available in hose reel lengths of 250' and 500'\*\*. The hose construction has one layer of high tensile braided steel reinforcement and rubber construction throughout, making them the hose-of-choice for manufacturers of commercial-duty pressure washers. Reels are an ideal option for customizing hose assemblies for your unique needs and suitable for cold and hot-water commercial pressure cleaning applications.

- › Reinforcement: 1 or 2-Layer Wire Braid
- › Cover: Smooth or Wrapped Rubber
- › Inner Diameter: 1/4" or 3/8"
- › Working (Max): 3000 PSI (1/4"), 4000 PSI (3/8" 1-Wire) or 6000 PSI (3/8" 2-wire)
- › Burst (Min) 3:1 Working Pressure
- › Impulse Life: 200,000+
- › Temperature (Max): 250°F



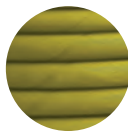
BLACK



BLUE (BL)



GREY (GR)



YELLOW (YL)

**\* STANDARD 24-HOUR SHIPPING COMMITMENT IS NOT GUARANTEED FOR BULK HOSE REELS. PLEASE CONTACT YOUR CUSTOMER SERVICE TEAM FOR PRODUCT AVAILABILITY.**

**\*\* Not all sizes/colors are available in both 250' and 500'.**



### Bulk Smooth Rubber | 1/4" 3000PSI (250°) (1-Wire Braid)

Item Code	Description
SHPW-04-500RL	PW RBR SM 1WIRE 1/4" 3000PSI, 500' REEL (Smooth Black)
SHPW-04BL-250RL	PW RBR SM 1WIRE BL 1/4" 3000PSI, 250' REEL (Smooth Blue)
SHPW-04BL-500RL	PW RBR SM 1WIRE BL 1/4" 3000PSI, 500' REEL (Smooth Blue)

### Bulk Smooth Rubber | 3/8" 4000PSI (250°) (1-Wire Braid)

Item Code	Description
SHPW-06-500RL	PW RBR SM 1WIRE 3/8" 4000PSI, 500' REEL (Smooth Black)
SHPW-06BL-250RL	PW RBR SM 1WIRE BL 3/8" 4000PSI, 250' REEL (Smooth Blue)
SHPW-06BL-500RL	PW RBR SM 1WIRE BL 3/8" 4000PSI, 500' REEL (Smooth Blue)

### Bulk Wrapped Rubber | 3/8" 4000PSI (250°) (1-Wire Braid)

Item Code	Description
HPW1-06-250RL	PW RBR 1WIRE 3/8" 4000PSI, 250' REEL (Black)
HPW1-06-500RL	PW RBR 1WIRE 3/8" 4000PSI, 500' REEL (Black)
HPW1-06BL-500RL	PW RBR 1WIRE BL 3/8" 4000PSI, 500' REEL (Blue)
HPW1-06GR-500RL	PW RBR 1WIRE GR 3/8" 4000PSI, 500' REEL (Grey)
HPW1-06YL-250RL	PW RBR 1WIRE YL 3/8" 4000PSI, 250' REEL (Yellow)
HPW1-06YL-500RL	PW RBR 1WIRE YL 3/8" 4000PSI, 500' REEL (Yellow)

### Bulk Wrapped Rubber | 3/8" 6000PSI (250°) (2-Wire Braid)

Item Code	Description
HPW2-062-250RL	PW RBR 2WIRE 3/8" 6000PSI, 250' REEL (Black)
HPW2-06-500RL	PW RBR 2WIRE 3/8" 6000PSI, 500' REEL (Black)
HPW2-06GR-250RL	PW RBR 2WIRE GR 3/8" 6000PSI, 250' REEL (Grey)
HPW2-06GR-500RL	PW RBR 2WIRE GR 3/8" 6000PSI, 500' REEL (Grey)

**STANDARD 24-HOUR SHIPPING COMMITMENT IS NOT GUARANTEED FOR BULK HOSE REELS. PLEASE CONTACT YOUR CUSTOMER SERVICE TEAM FOR PRODUCT AVAILABILITY.**

# QUICK CONNECT SOCKETS & PLUGS\*



## 1/4" Quick Connects

Item Code	Description
14-0396	QC 1/4" FNPT BRASS SOCKET
14-0414	QC 1/4" FNPT S.S. SOCKET
14-0411	QC 1/4" FNPT BRASS PLUG
14-0399	QC 1/4" FNPT ZINC STEEL PLUG
14-0403	QC 1/4" FNPT S.S. PLUG
14-0397	QC 1/4" MNPT BRASS SOCKET
10-0406	QC 1/4" MNPT BRASS PLUG
10-0400	QC 1/4" MNPT ZINC STEEL PLUG
10-0402	QC 1/4" MNPT S.S. PLUG

## ALLOWS FOR EFFICIENT CHANGEOVER & INSTALLATION

## 1/4" Quick Connects

Item Code	Description
14-0389	QC 3/8" FNPT BRASS SOCKET VITON ORING
14-0376	QC 3/8" FNPT S.S. SOCKET VITON
14-0412	QC 3/8" FNPT BRASS PLUG
14-0390	QC 3/8" FNPT ZINC STEEL PLUG
14-0377	QC 3/8" FNPT S.S. PLUG
14-0398	QC 3/8" MNPT BRASS SOCKET
10-0407	QC 3/8" MNPT BRASS PLUG
10-0401	QC 3/8" MNPT ZINC STEEL PLUG
10-0391	QC 3/8" MNPT S.S. PLUG

- › FST Straight Thru Style: no check valve in socket or plug
- › Materials: brass, zinc plated steel and stainless steel
- › Size: 1/4", 3/8" or 1/2" in both male and female configurations
- › Buna-N O-Ring: excellent ozone, chemical and aging resistance
- › Viton® O-Ring: standard on items 14-0389 and 14-0376
- › Viton® Replacement O-Rings: available on request and sold separately
- › Temperature (Min/Max): operating range -40°F/250°F
- › Optional Viton® O-Ring Temperature (Min/Max): operating range -15°F/400°F

## 1/2" QUICK CONNECTS

Item Code	Description
14-0409	QC 1/2" FNPT BRASS SOCKET
14-0413	QC 1/2" FNPT BRASS PLUG
14-0410	QC 1/2" FNPT STEEL PLUG
14-0408	QC 1/2" MNPT BRASS PLUG
14-0404	QC 1/2" MNPT BRASS SOCKET
14-0405	QC 1/2" MNPT STEEL PLUG

**\*STANDARD 24-HOUR SHIPPING COMMITMENT IS NOT GUARANTEED FOR QUICK CONNECTS. PLEASE CONTACT YOUR CUSTOMER SERVICE TEAM FOR AVAILABILITY.**





**14-0396**

QC 1/4" FNPT  
BRASS SOCKET



**14-0414**

QC 1/4" FNPT  
S.S. SOCKET



**14-0411**

QC 1/4" FNPT  
BRASS PLUG



**14-0399**

QC 1/4" FNPT  
ZINC STEEL PLUG



**14-0403**

QC 1/4" FNPT  
S.S. PLUG



**14-0397**

QC 1/4" MNPT  
BRASS SOCKET



**14-0406**

QC 1/4" MNPT  
BRASS PLUG



**14-0400**

QC 1/4" MNPT  
ZINC STEEL PLUG



**14-0402**

QC 1/4" MNPT  
S.S. PLUG



**14-0389**

QC 3/8" FNPT  
BRASS SOCKET  
VITON ORING



**14-0376**

QC 3/8" FNPT  
S.S. SOCKET  
VITON



**14-0412**

QC 3/8" FNPT  
BRASS PLUG



**14-0390**

QC 3/8" FNPT  
ZINC STEEL PLUG



**14-0377**

QC 3/8" FNPT  
S.S. PLUG



**14-0398**

QC 3/8" MNPT  
BRASS SOCKET



**14-0407**

QC 3/8" MNPT  
BRASS PLUG



**14-0401**

QC 3/8" MNPT  
ZINC STEEL PLUG



**14-0391**

QC 3/8" MNPT  
S.S. PLUG



**14-0409**

QC 1/2" FNPT  
BRASS SOCKET



**14-0413**

QC 1/2" FNPT  
BRASS PLUG



**14-0410**

QC 1/2" MNPT  
STEEL PLUG



**14-0408**

QC 1/2" MNPT  
BRASS PLUG



**14-0404**

QC 1/2" MNPT  
BRASS SOCKET



**14-0405**

QC 1/2" MNPT  
STEEL PLUG

# ProPulse NOW!

## LIMITED WARRANTY

Subject to the limitations stated herein, Schieffer Co. International, L.C., dba ProPulse (Seller) warrants that the products manufactured by Seller identified below shall be free from material defects in materials and workmanship and shall perform the services for which they are intended when properly installed, under normal use, and under ordinary conditions, for:

**HYDRAULIC HOSE:** A period of 365 days from the date of shipment of the product to BUYER.

**HIGH PRESSURE CLEANING HOSE:** A period of 180 days from the shipment of the product to the BUYER.

Buyer must notify Seller in writing of a potentially defective product as soon as possible, which notice must provide the appropriate marked date codes, part numbers of the product and a description of the potential defect. Upon receipt of such notice, Seller shall, at its option and at its expense, examine such product at Seller's factory or such other location as Seller shall determine. Should Seller agree to a return of the product, Buyer shall follow in every respect the packaging and transportation instructions provided by Seller. In no case shall a product be returned without first obtaining the permission of Seller. If a product is proven to the satisfaction of Seller to be defective, then Seller shall, at its option and at its expense, repair or replace such product or reimburse Buyer for the price paid by Buyer for such product, and credit will be issued to Buyer to offset the expense of the return shipment to Seller for shipments within the continental United States. The cost of shipping to Buyer a repaired or replaced product shall be paid by Seller on the same shipping terms as the original shipment of such product to Buyer. Except as stated herein, Buyer shall assume all responsibility and expense for any dismantling, removal, reinstallation, and shipping in connection with this Limited Warranty, and no claims will be allowed for labor, shipping, materials, incidental, consequential, or other costs incident to the repair, replacement, or return of a product.

THIS LIMITED WARRANTY IS THE ONLY WARRANTY PROVIDED BY SELLER AND IS MADE IN LIEU OF ALL OTHER WARRANTIES, EXPRESS OR IMPLIED, INCLUDING BUT NOT LIMITED TO THE IMPLIED WARRANTIES OF MERCHANTABILITY AND FITNESS FOR A PARTICULAR PURPOSE AND THOSE ARISING BY OPERATION OF LAW, TRADE USAGE, OR COURSE OF DEALING.

NOTWITHSTANDING THE FOREGOING, THERE ARE NO WARRANTIES WHATSOEVER ON PRODUCTS BUILT OR ACQUIRED WHOLLY OR PARTIALLY TO BUYER'S DESIGNS OR SPECIFICATIONS.

SELLER'S LIABILITY IS LIMITED TO REPAIR, REPLACEMENT, OR REIMBURSEMENT AS PROVIDED ABOVE, AND IN NO EVENT SHALL SELLER'S LIABILITY EXCEED THE PURCHASE PRICE OF THE PRODUCT(S) INVOLVED. THIS LIMITED WARRANTY PROVIDES THE EXCLUSIVE REMEDY AGAINST SELLER FOR CLAIMS RELATING TO PRODUCTS, WHETHER IN CONTRACT, IN TORT (INCLUDING NEGLIGENCE), OR UNDER ANY OTHER LEGAL THEORY, AND WHETHER ARISING OUT OF WARRANTIES, REPRESENTATIONS, INSTRUCTIONS, OR DEFECTS FROM ANY CAUSE. IN NO EVENT SHALL SELLER BE

LIABLE FOR OR OBLIGATED TO PAY ANY CONSEQUENTIAL, INCIDENTAL, SPECIAL, INDIRECT, OR PUNITIVE DAMAGES OF ANY KIND, INCLUDING, BUT NOT LIMITED TO LOST PROFITS. THIS LIMITED WARRANTY EXTENDS ONLY TO BUYERS WHO PURCHASE SELLER'S PRODUCT(S) DIRECTLY FROM SELLER ("ORIGINAL PURCHASERS"), INCLUDING MANUFACTURERS, RETAILERS, DEALERS, DISTRIBUTORS AND WHOLESALERS. THIS LIMITED WARRANTY IS NOT ASSIGNABLE OR OTHERWISE TRANSFERABLE BY THE ORIGINAL PURCHASER TO ANY OTHER PARTY. SELLER EXTENDS NO WARRANTY, EXPRESS OR IMPLIED, INCLUDING BUT NOT LIMITED TO THE IMPLIED WARRANTIES OF MERCHANTABILITY AND FITNESS FOR A PARTICULAR PURPOSE, TO "CONSUMERS," AS THAT TERM IS DEFINED IN THE MAGNUSON-MOSS WARRANTY ACT (15 U.S.C. SECTIONS 2301 ET SEQ.) AND THE REGULATIONS PROMULGATED THEREUNDER. IN NO EVENT SHALL THE DURATION OF ANY IMPLIED WARRANTY OF MERCHANTABILITY OR FITNESS FOR A PARTICULAR PURPOSE BE LONGER THAN THE PERIOD PRESCRIBED HEREIN.

This Limited Warranty shall not apply to product failure or defect: caused by external or internal abrasion, kinking, twisting, cutting, pulling, impact, use for the transfer or spray of flammable materials (including solvents, petroleum, and gases of any kind), use with fluids which exceed the product's labeled pressure or temperature limits, storm, fire, wind, accident, or similar casualty; where the product has been modified without the prior written authority of Seller; caused by installation or use of the product contrary to any instructions or specifications provided by Seller; caused by the improper installation, use, application, maintenance, repair, transportation, handling, or storage of the product; caused by the fault or negligence of anyone other than Seller or any other act or event beyond the control of Seller. Seller makes no warranties as to any products or product parts or components that are not manufactured by Seller, and such items may be warranted only to the extent of the original manufacturer's warranty, if any. The limitations of liability contained in this Limited Warranty shall be effective without regard to Seller's performance or failure or delay of performance under any other term or condition of any trade customs, warranty, or other agreement. No employee, representative, or agent of Seller, nor any other person, has authority to assume or incur on behalf of Seller any liability, obligation, or responsibility in place of or in addition to this Limited Warranty.



ProPulse NOW!

## ORDERING INFORMATION

Discounts are available based on annual purchase commitments or volume purchase quantities. Please contact the ProPulse customer service team for annual purchase requirements and details on the discount program.

### IN-STOCK ProPulse NOW! Orders:

- + In-stock orders typically ship within 24 hours
- + Orders ship F.O.B. Peosta, Iowa
- + \$200 minimum purchase order requirement\*
- + Drop ship orders add an extra cost per shipping address\*\*
- + Open credit terms available: VISA®, MASTERCARD® and DISCOVER® accepted
- + Convenience fee applies to all credit card transactions\*\*
- + ProPulse has the right to substitute a product of equal or greater performance at any time
- + Pricing and specifications are subject to change at any time

### NON-STOCK ProPulse NOW! Orders:

- + Non-stock items generally ship within 7-10 business days from receipt of PO
- + Contact ProPulse's customer service team for minimum purchase requirements and ordering info

### ORDER THESE INNOVATIVE PRODUCTS TODAY.



**PHONE**  
**563-583-4758**



**EMAIL INFO@**  
**POWERMoving**  
**FORWARD.COM**

**CREDIT RETURNS:** We accept credit returns of in-stock ProPulse items up to 90 days after purchase with a 15% restocking fee. Please contact your service team for "Return Materials Authorization" (RMA). Return shipping costs must be prepaid by you and include a copy of the RMA. When returning item(s), credit (less the original shipping and restocking fees) will be issued upon return and evaluation of original condition. Due to the custom nature of non-stock items, credit returns are not accepted. For warranty returns, please refer to our limited warranty policy.

\* Fee will be applied to orders less than \$200.

\*\* Contact ProPulse's customer service team for specifics.





**PHONE + EMAIL + WEB**

563-583-4758  
[info@powermovingforward.com](mailto:info@powermovingforward.com)  
[www.powermovingforward.com](http://www.powermovingforward.com)

**CORPORATE ADDRESS**

ProPulse, A Schieffer Co.  
9866 Kapp Ct. | PO Box 13  
Peosta, IA 52068-0013